

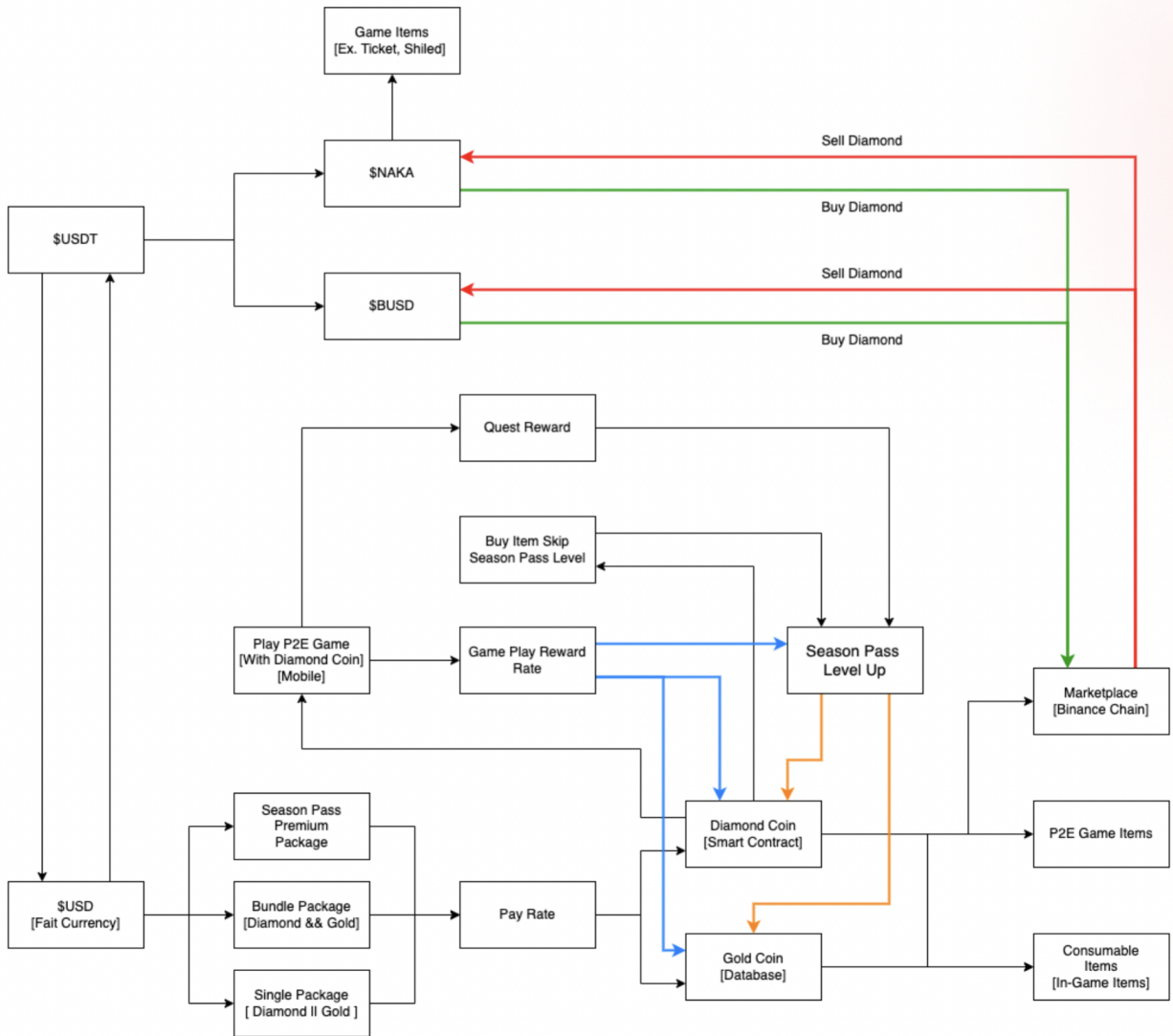
**NAKAMOTO.GAMES**

TM

What is SEASON PASS

The Nakamoto Games Season Pass is a thrilling and rewarding in-game feature designed to elevate players' engagement and enthusiasm on the platform. Throughout each season, players embark on missions within the platform and participate in gameplay to earn valuable points that unlock 100 checkpoints over a period of 1-2 months. As they progress through the checkpoints, players gain access to an array of enticing rewards, including in-game play-to-earn items, valuable in-game coins, exciting gacha boxes, consumable items, coveted character skins, and even exclusive NFTs in select seasons.

The Season Pass not only empowers players to explore the diverse offerings on Nakamoto Games but also fosters a sense of achievement and progression as they conquer each checkpoint. By blending immersive gameplay, mission-based challenges, and a wide range of desirable rewards, the Season Pass endeavors to create a dynamic and engaging gaming experience that captivates players, encourages ongoing activity, and enhances the overall joy of the Nakamoto Games platform.



How to Apply for the Nakamoto Games Season Pass:

Players can earn The Season Pass by completing daily quests and missions. It lasts for 60 days and has 100 levels. Each level offers rewards like gold, gems, or special game items.

If you're not a subscriber, you'll get 80 gold for every 2 levels and 12 gems for every 10 levels you progress in the Season Pass.

But if you're a Premium subscriber, you have an advantage. You get a 15% boost in your Season Pass progression. So, you'll receive 160 gold every 2 levels, 36 gems every 10 levels, and specific game items every 5 levels. On top of that, you also get all the rewards from the free Season Pass.

So, there are two tiers of The Season Pass with different benefits – one for free players and one for Premium subscribers.

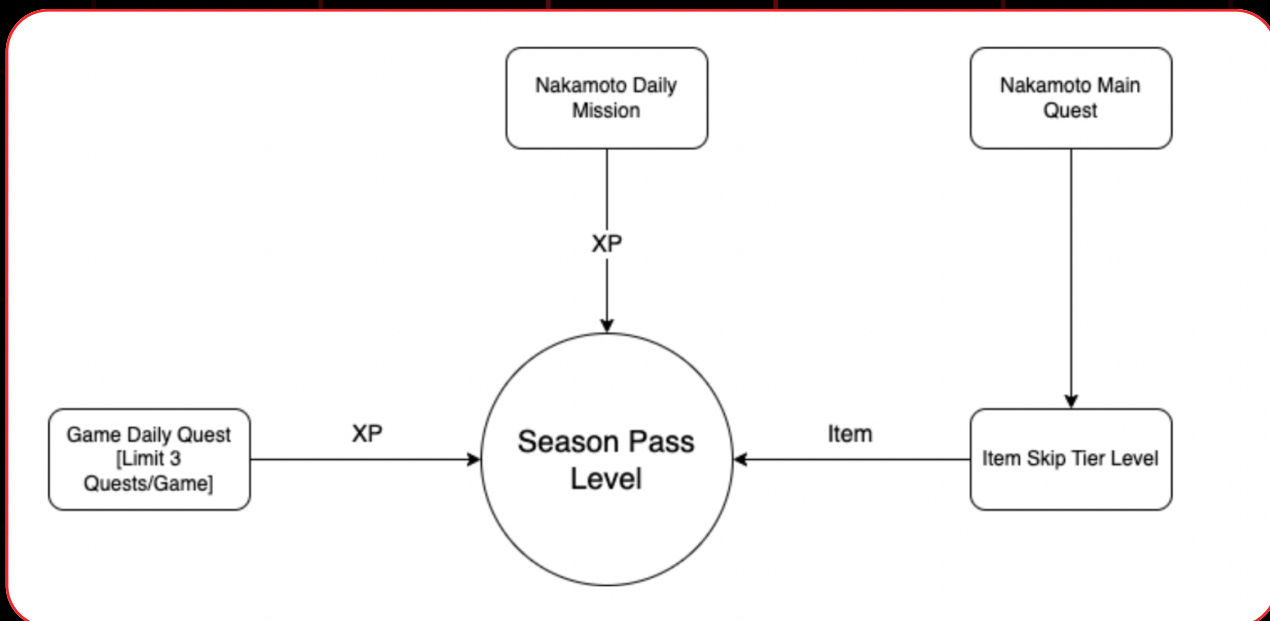


Free & Premium Season Pass Reward Data

Item	Free	Premium
Gold Coin	80 (every 2 levels)	160 (every 2 levels)
Diamond Coin	12 (every 10 levels)	36 (every 10 levels)
Free Item (Treasure Box)	1 (every 30 levels)	1 (every 5 levels)

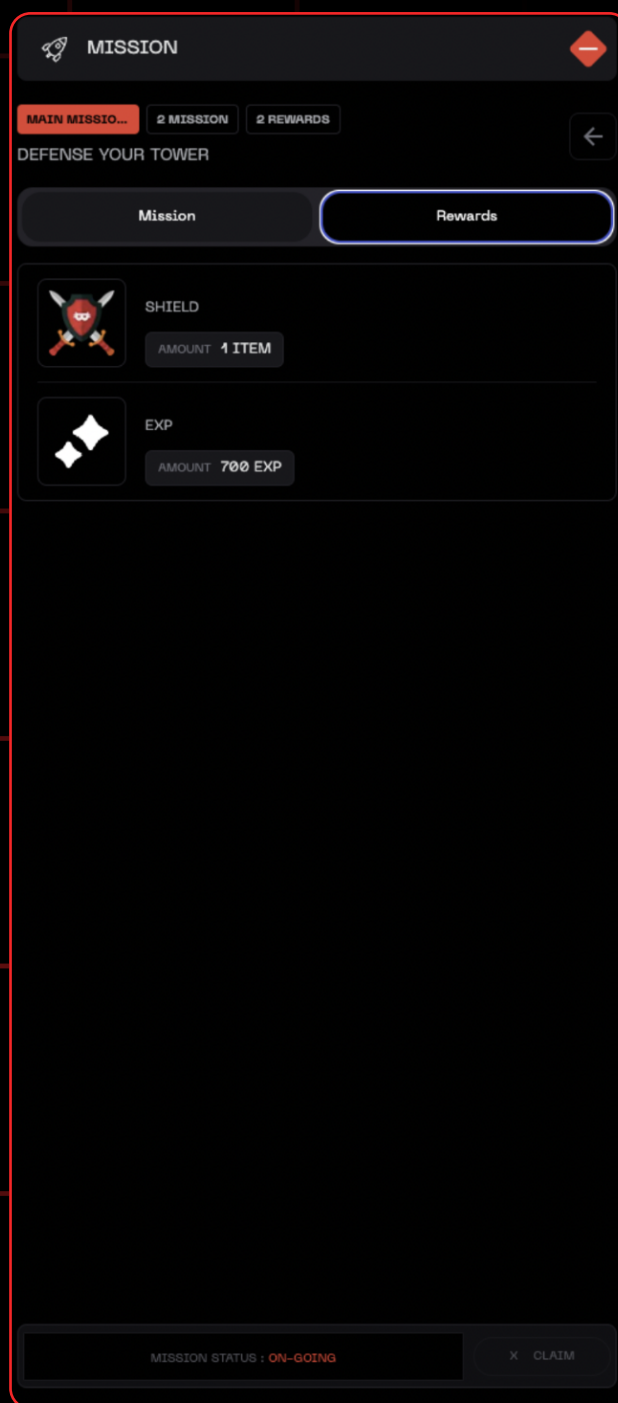
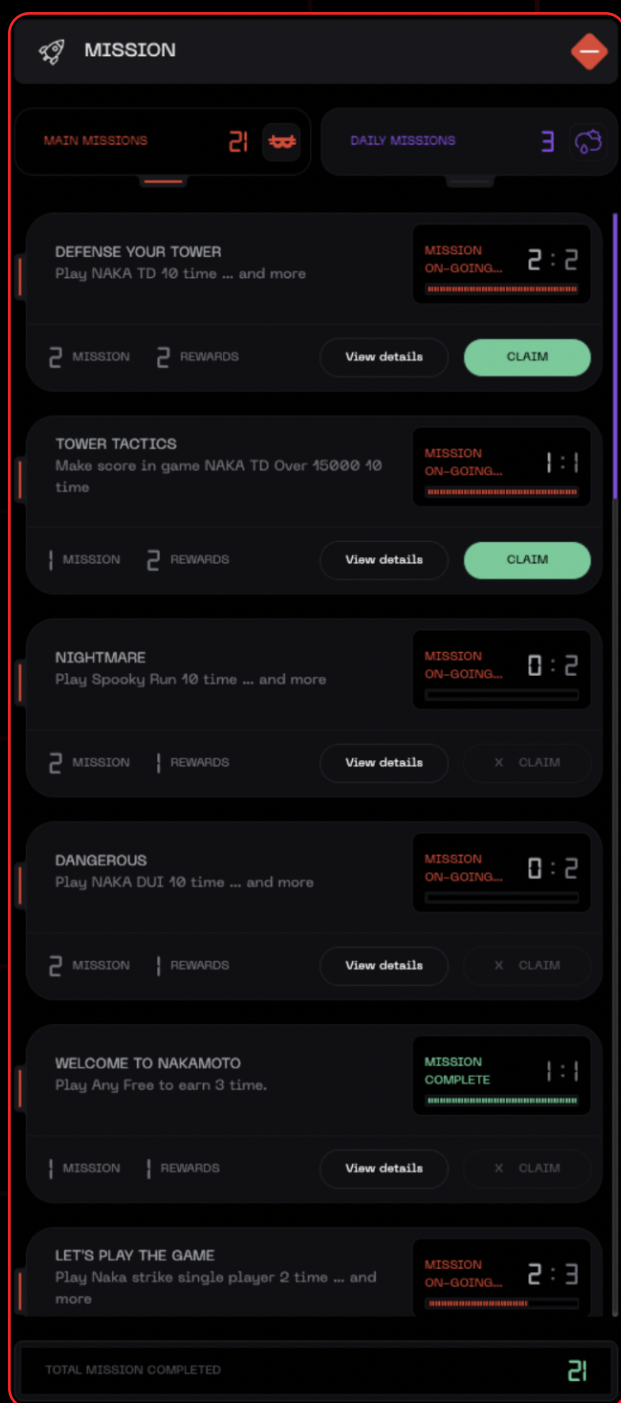
Remarks: The allocation of points & dates may be subject to change based on our team's calculations and evaluations.

Understanding the Season Pass XP Level & How to Earn XP:



In the inaugural version of the game, players have two methods available to earn Season Pass XP points and procure items that allow them to bypass a Season Pass level. These can be accrued through active participation in Nakamoto's primary events, tournaments, and quests. Alternatively, they can be secured via in-app purchase bundles. Both strategies present opportunities to advance swiftly through the Season Pass levels.

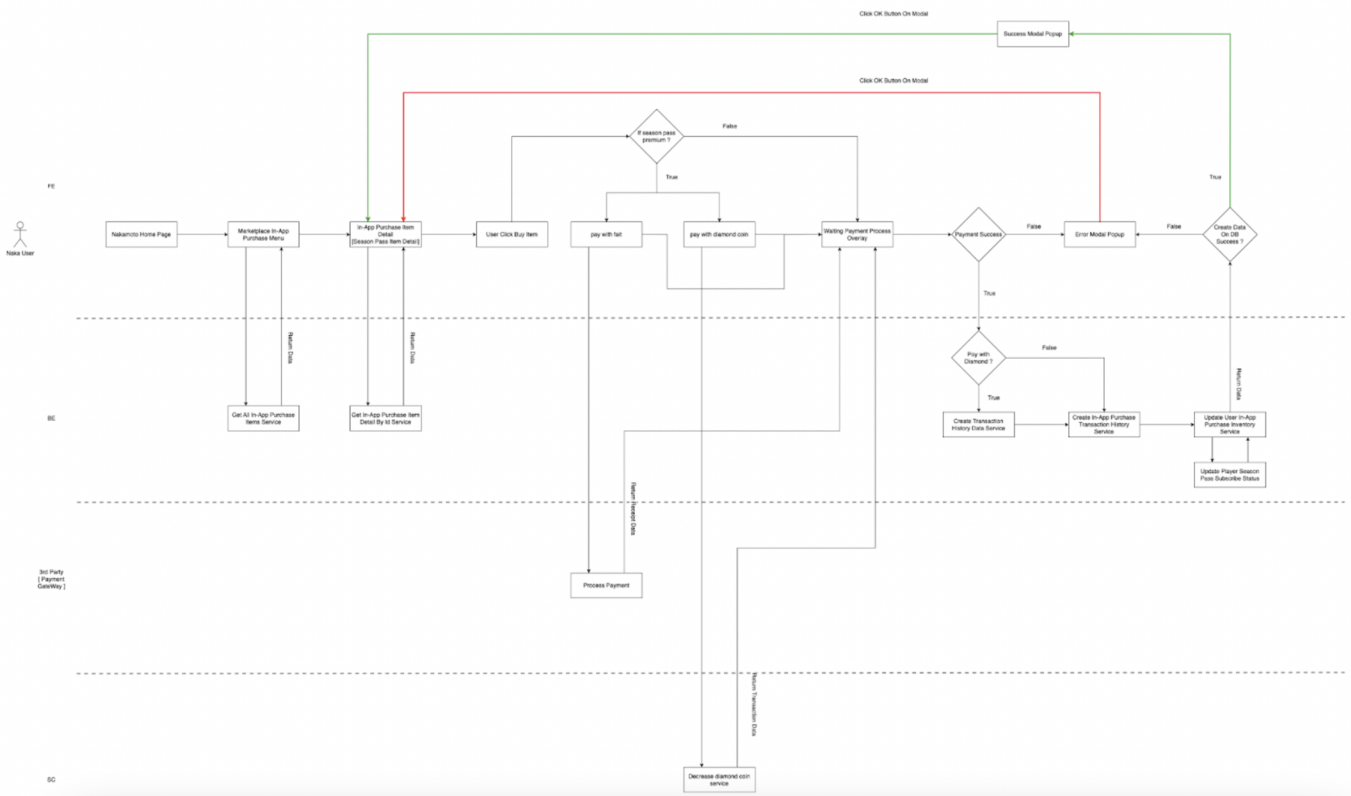




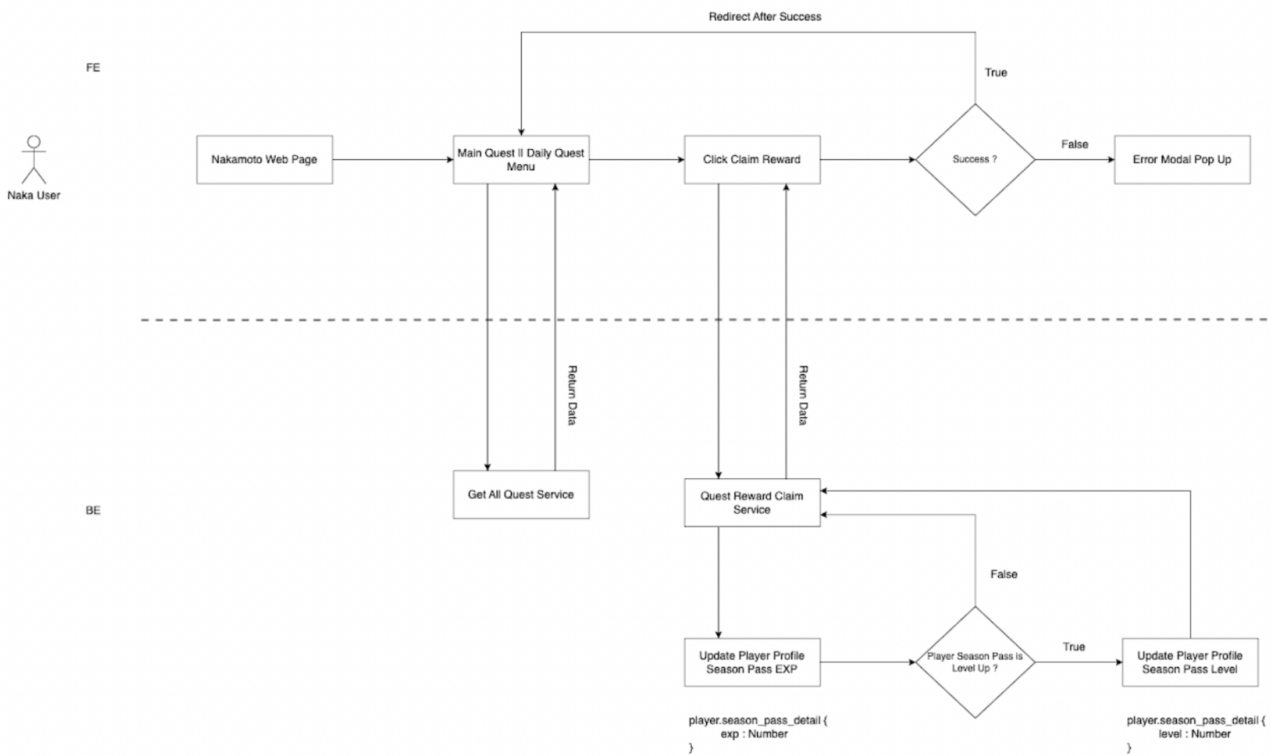
Workflow:

- The diagram below illustrates the process by which users can purchase a Premium Season Pass, detailing the steps and benefits associated with this option within the game.

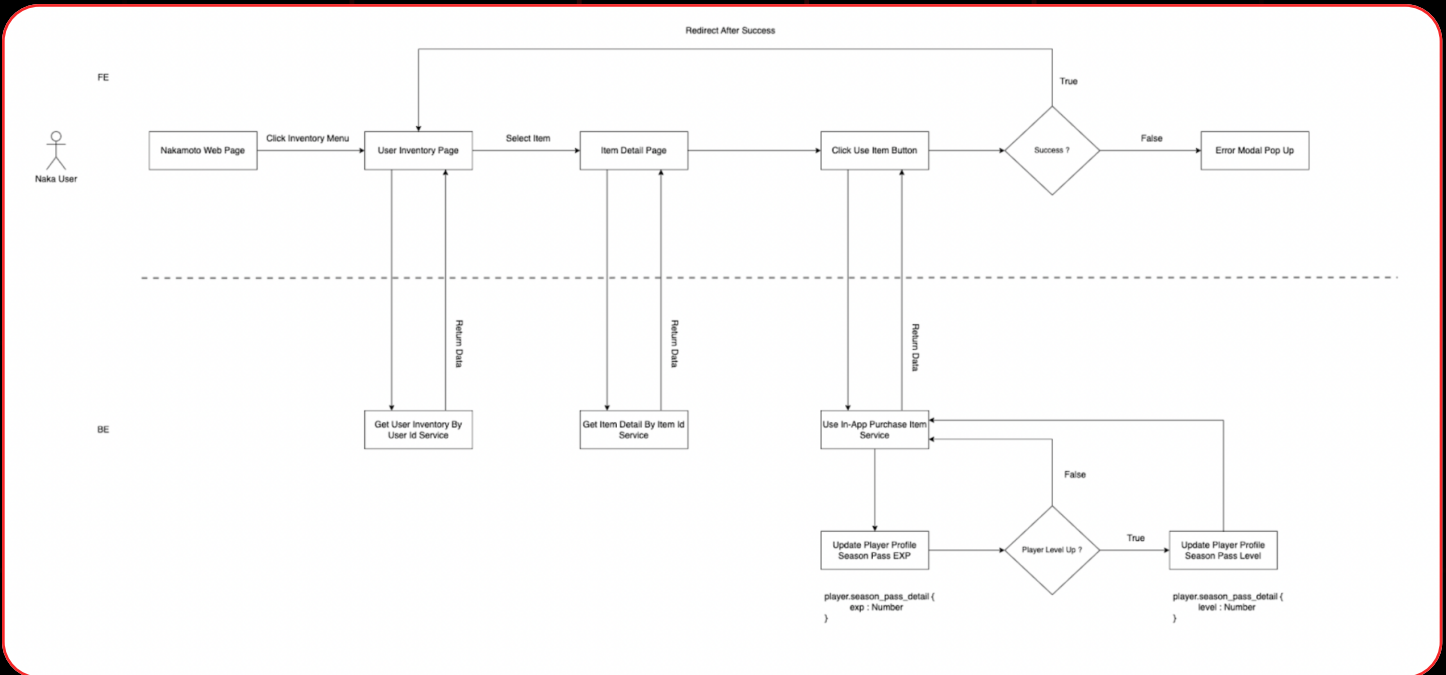




The following illustration details the method by which Season Pass XP is calculated when a player completes a main or daily quest, showcasing the specific interactions and calculations involved.



- The following diagram outlines the mechanism by which Season Pass XP is calculated when a player utilizes an item to skip a Season Pass level, highlighting the specific interactions and computations involved.



- The diagram below provides an overview of the administrative functions, illustrating how administrators have the ability to Create, Read, Update, and Delete (CRUD) Season Pass data within the system.

